

TOR BAY HARBOUR AUTHORITY
HARBOUR MASTERS NOTICE 03/10



NOTICE TO MARINERS

APPROACHES TO TORQUAY HARBOUR

Effective until: Re-issued in April 2011

All mariners are reminded to keep to the starboard side of the channel when entering or leaving Torquay Harbour. Craft entering the harbour should do so on an easterly heading and should **not use** the seasonal starboard hand buoy as a turning mark or a point at which to slow down. Mariners should reduce speed to a maximum of 5 knots before reaching the starboard hand buoy. Vessels leaving the harbour should remain on a westerly heading at a maximum speed of 5 knots until they are well clear of the starboard hand buoy.

Mariners using a passage plan should set their first or final 'way-point' to a position that is west of the harbour entrance and/or seasonal starboard hand buoy, at a sufficient distance to make a safe approach/departure. Please see the attached plan as a guide.

Torquay Harbour entrance can be extremely busy with many different vessels seeking to navigate in the area. These craft can range from large passenger boats to sailing dinghies and sometimes canoes. All mariners are instructed to proceed with caution and keep to a safe speed.

The International Regulations for Preventing Collisions at Sea will apply at all times.

Capt K Mowat
Harbour Master

Issue date: 16th July 2010



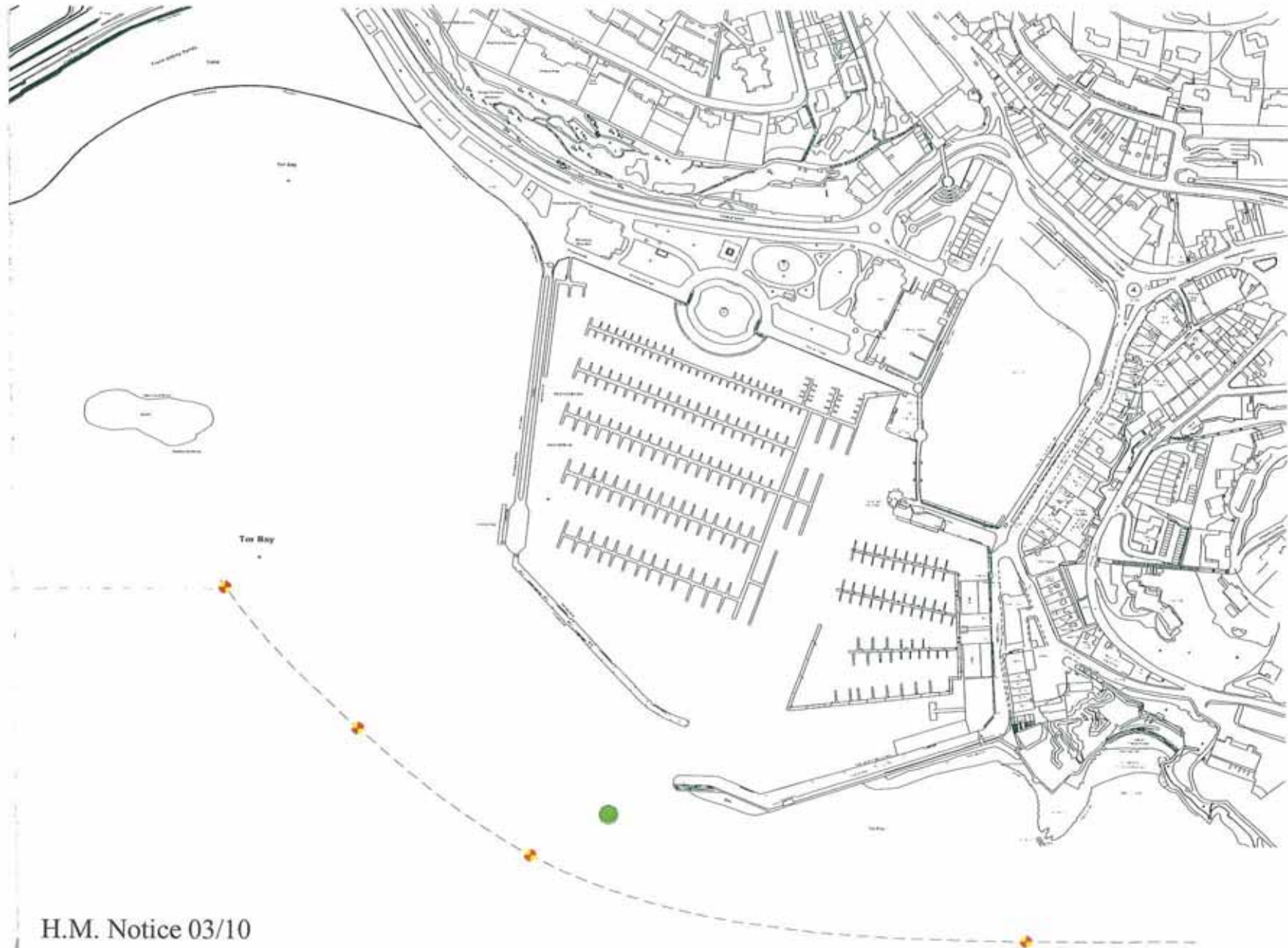
TORQUAY • PAIGNTON • BRIXHAM

Torquay Harbour Office
Beacon Quay
Torquay Harbour
Torquay TQ1 2BG
t: 01803 292429
f: 01803 299257

Paignton Harbour Office
South Quay
Paignton Harbour
Paignton TQ4 6DT
t: 01803 557812
f: 01803 520057

Brixham Harbour Office
Brixham Harbour Office
New Fish Quay
Brixham TQ5 8AJ
t: 01803 853321/851854
f: 01803 852434





H.M. Notice 03/10

Approaches to Torquay Harbour